

COSMO Adhesives

Permanent solid bonding



weiss

Together toward success

A strong partner

weiss

Quality, service and high delivery reliability are the basic pillars of the success of our group of companies. We have continuously improved and further developed our portfolio in the last years; this also includes the acquisition of new companies. By now, about 325 employees at four sites participate in the success of our group.



Company

By pooling the core competences of our business segments of adhesives and sandwich panels under a single roof, we are able to offer solutions from one source to our customers that are efficient and of high technical quality.

We are among the leading manufacturers in these two business segments in Europe and moreover, we also increasingly sell our products outside of Europe, such as in China, Russia and the USA.

Company history

Since the company's foundation in 1815, Weiss has developed from a small hide-glue producer to an internationally acting, industrial company for modern adhesive systems and sandwich elements. With a passion for quality and the aspiration to meet our customers' high expectations, we are a recognised and reliable partner on the market.

Powerful product range

Business area Adhesives

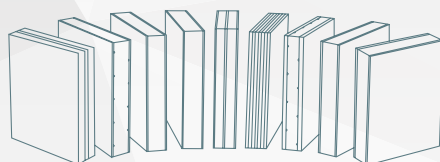


Durably firm joints

Traditional joining technologies like riveting, soldering, welding, or screwing, will increasingly be replaced by modern adhesive systems, resulting in many advantages.

Our product range includes more than 400 variants of surface and construction adhesive and superglues, as well as special adhesives for a wide variety of applications.

Business area Composite panels



Unlimited possibilities for design

Our range of products includes more than 5,000 variants of composite panels. Because there is a large number of top coats and core materials available as well as the possibility of combining and processing them in many different ways, a vast number of creative designs results for the finished element.

PUDOL Cleaning and care agent



Cleanliness refreshes your senses

PUDOL stands for convincing quality of special products in the field of commercial cleaning. In addition to a complete range of cleaning and care products for different applications, we are offering a comprehensive service with interesting solutions and benefits.



A subsidiary
of the Weiss Group



Weiss is the only enterprise that produces adhesives and sandwich elements.

COSMO Adhesives

Durably firm joints



Our
competencies

p. 04

Polyurethane
COSMO PU

p. 06

Hybrid
COSMO HD

p. 14

Epoxy
COSMO EP

p. 18

Bio-based
COSMO
BIO-BASED

p. 19

Cyanoacrylate
COSMO CA

p. 20

Dispersion
COSMO DS

p. 22

Diffusion
COSMO SL

p. 24

Cleaner
COSMO CL

p. 26

Accessories
COSMO SP

p. 28

Synergy

p. 29

Interaction

p. 30

Certifications

Low-emission adhesives from Weiss / www.emicode.de

GEV-EMICODE®-licensed products

EMICODE® is a recognised standard for construction products (adhesives, amongst others) promoting healthy living and is a quality label for the proof of low VOC-emissions. Products labelled with EMICODE® are modern, solvent-free and low-emission construction products.



The "DIN-certified bio-based" label /

www.dincertco.de

A neutral and transparent quality label regarding the content of bio-based carbon and the product quality makes finding re-source-efficient products easier. By using the "DIN-certified bio-based" label, it is certified that we use bio-based raw materials and undergo regular monitoring.



8C092

Our competencies in adhesive technology

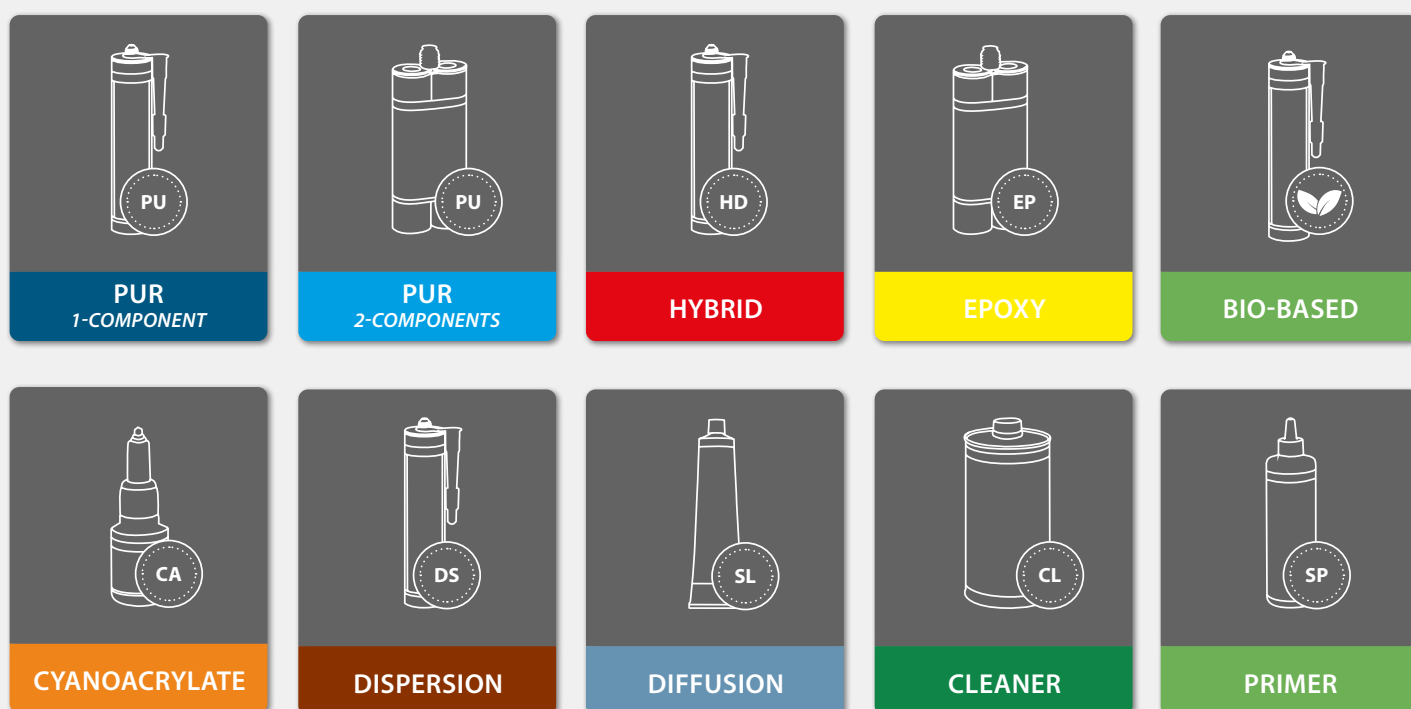
More than 200 years of experience

Durably firm joints

Traditional joining technologies like riveting, soldering, welding, or screwing, will increasingly be replaced by modern adhesive systems, resulting in many advantages.

Our product range includes more than 400 variants of surface adhesive and construction adhesive and special adhesive for a wide variety of applications.

Our adhesive systems & cleaning agents



Fields of application

Weiss is offering highly loadable adhesive systems for the most diverse fields of application. With the help of our adhesives, you ensure the required high quality of your product and achieve strengths that guarantee safe and durable bonding of your adherends also under extreme loads.





Application engineering

It is very important to us to provide professional and innovative solutions with convincing advantages for production methods and with high efficiency in close cooperation with our customers. A team of chemists and application engineers with long-term experience in development, modification and application of adhesives will be on hand with help and advice for you.



Customer-specific solutions

Our standard range of products consists of more than 400 types of adhesive for the most diverse applications. If, however, the suitable adhesive should not be available for you, we are offering a very special service. We are able to develop adhesive systems that will be customized with 100 % to your individual bonding tasks.



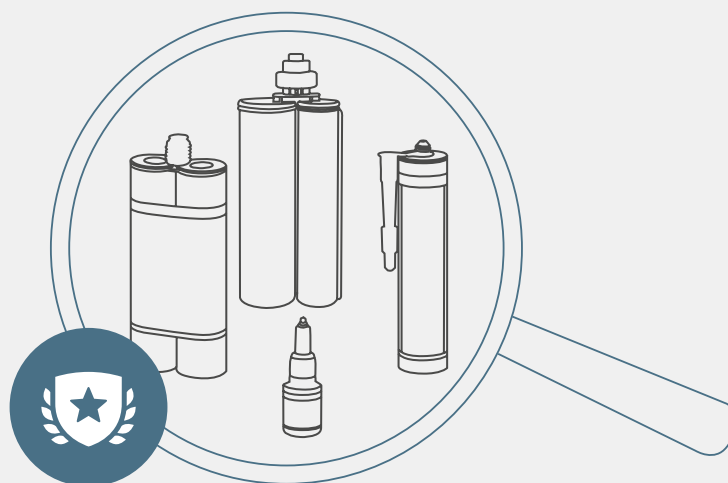
Private label / individual layout

We would also like to produce and finish our products in accordance with your individual layout. We are offering special flexibility as well as long-term experience and respond with sensitivity on your wishes. Your own brand can profit from the high quality and reliability of our products.

Certified quality

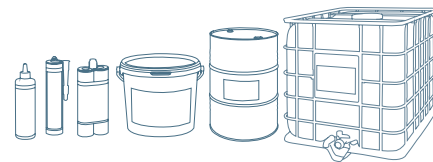
Our own quality tests as well as our cooperation with various testing institutes ensure the high quality of our products. We are working together with the following testing institutes:

- AWOK, Kaiserslautern
- DMT, Dortmund
- eco, Cologne
- Eurofins, Denmark
- Exova, Frankfurt
- FH Bielefeld
- IBP, Stuttgart
- IFAM, Bremen
- ift, Rosenheim
- ILAK, Wettenberg
- ISEGA, Aschaffenburg
- Kiwa, Flörsheim
- MPA, Braunschweig
- TU, Berlin



COSMO PU Polyurethane Adhesives

Adhesives for extreme conditions

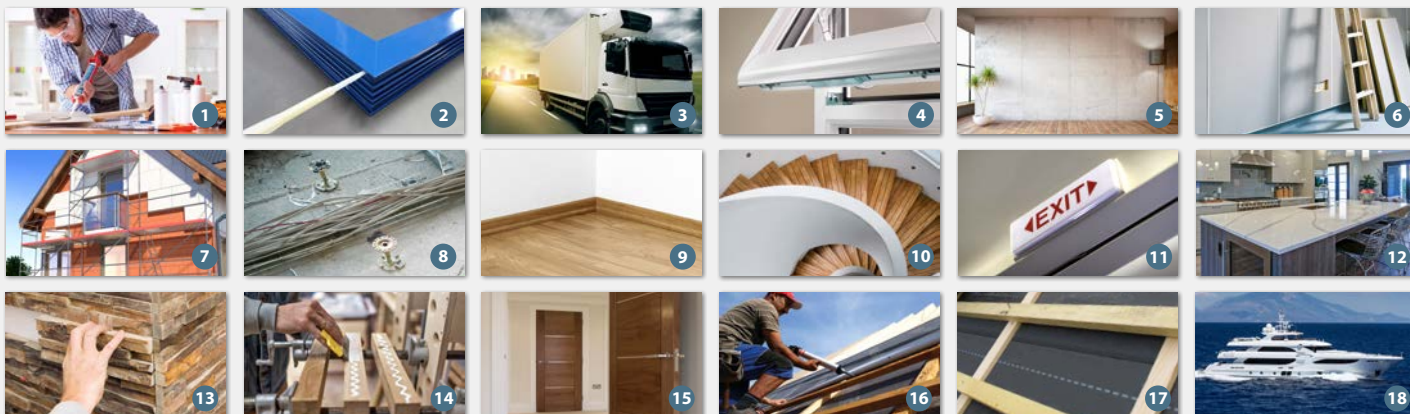


Design & assembly

Due to their wide range of application possibilities, our one- and two-component-PUR adhesive systems are suitable for bonding of the most different materials and therefore, they are used in various industrial areas for structural bonding as well as for the assembly by the building industry and craftsmen.

Examples for application

- 1 Universal assembly bonding in industry and craftsmanship
- 2 Aluminium window and door construction for bonding of corner joints
- 3 Structural, force-locking bonding in the field of vehicle body manufacturing
- 4 High-strength bonding of mitre cut surfaces of PUR window and door profiles
- 5 Hard pointing of wall elements (wall cladding)
- 6 Joint bonding of sheets of PUR-recycled material, gypsum fibre boards, cement chipboards and floor tiles
- 7 Bonding of isolation and insulation panels
- 8 Fixation of struts for double floorings
- 9 Laying of skirting and laminate
- 10 Construction and renovation of stairs
- 11 Fixation of designation labels, coverings and linings
- 12 Kitchen work desks made of natural stone and composites for the bonding of substructures
- 13 Bonding of natural stone and tiles
- 14 Structural bonding in the field of wood processing
- 15 Board joint bonding of panels in the field of wood, window and front door construction
- 16 Overlapping joints of underroof, underlay, roof underlay and façade sheets
- 17 Sealing of underroof sheets, underlays, roof-underlays and façade-sheets in the area of nails staples
- 18 Structural bonding in shipbuilding



1 component	1	2	3	4	5	6	7	8	9	10	11	12	13	14	15	16	17	18	Particularities
COSMO PU-100.110	•	•						•	•	•	•				•				Assembly professional
COSMO PU-100.120																•	•		Windtight
COSMO PU-100.130	•	•								•									Metal pro
COSMO PU-100.200	•		•							•								•	Fast
COSMO PU-100.250	•							•	•	•				•	•				Powerful
COSMO PU-100.260						•	•												Living room specialist
COSMO PU-100.310	•	•								•					•				High-strength
COSMO PU-100.380	•									•									Multifunctional
COSMO PU-100.900	•	•						•	•	•	•				•				Bio-based
COSMO PU-160.110														•					Wood professional - powerful
COSMO PU-160.180														•					Wood professional - flowable
COSMO PU-160.190														•					Wood professional - fast
COSMO PU-160.230																	•		Rain-resistant
COSMO PU-180.120	•	•		•						•					•				Slow
COSMO PU-180.150	•	•								•					•				colourless
COSMO PU-190.110	•	•								•					•				Fibre-reinforced
2 components																			
COSMO PU-200.120		•								•		•	•						Fast strengths
COSMO PU-200.180			•							•								•	Allrounder, hardly inflammable
COSMO PU-200.280		•	•			•													Specialist window construction
COSMO PU-200.310		•	•											•					Specialist window construction, fast!
COSMO PU-200.334		•	•																Transportation specialist
COSMO PU-200.350		•	•		•														Wall cladding, free from H351
COSMO PU-200.900		•	•		•														Bio-based, free from H351

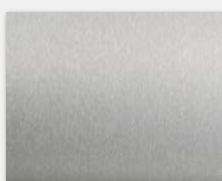
Examples of materials



Aluminium



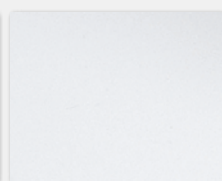
Steel



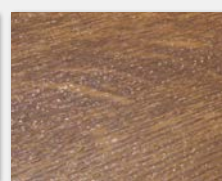
Stainless steel



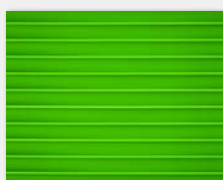
GFK



PVC hard



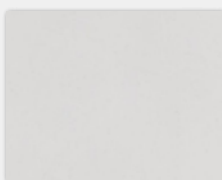
HPL



PC



Wood



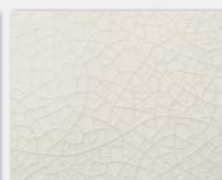
Gypsum



Stone



Cement



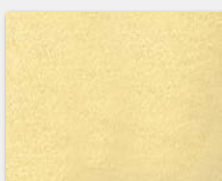
Ceramics



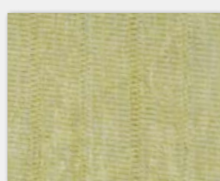
Brick



PS foam



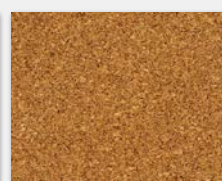
PUR foam



Mineral wool



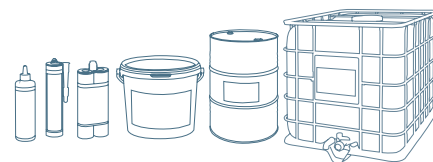
Bitumen



Cork

COSMO PU Polyurethane Adhesives

Adhesives for extreme conditions



1-component adhesives for construction & assembly

Adhesive system	Film property	Foaming	Viscosity +20 °C	Skinning time +20 °C dry [min]	Pressing time +20 °C [min]	Tensile shear strength +20 °C [N/mm ²]
COSMO PU-100.110	Tough-elastic	Low	Medium pasty	5	15	11
COSMO PU-100.120	Tough-elastic	Low	Medium pasty	7	-	16
COSMO PU-100.130	Tough-elastic	Medium	Medium pasty	7	20	12
COSMO PU-100.200	Tough-elastic	Low	Medium pasty	2	45	12
COSMO PU-100.250	Tough-hard	Low	Medium pasty	3	10	14
COSMO PU-100.260	Semi-hard	Strong	Lowpasty	60	240	17
COSMO PU-100.310	Semi-hard	Medium	Lowpasty	20	75	19
COSMO PU-100.380	Semi-hard	Low	Lowpasty	90	240	18
COSMO PU-100.900	Semi-hard	Strong	Medium pasty	5	15	14
COSMO PU-160.110	Tough-hard	Medium	4,500 mPa.s	35	90	13
COSMO PU-160.180	Tough-elastic	Medium	3,900 mPa.s	25	60	9
COSMO PU-160.190	Tough-hard	Medium	3,650 mPa.s	10	20	13
COSMO PU-160.230	Elastic	Medium	1,500 mPa.s	12	-	13
COSMO PU-180.120	Tough-elastic	Medium	Lowpasty	18	300	14
COSMO PU-180.150	Semi-hard	Medium	Lowpasty	10	30	14
COSMO PU-190.110	Semi-hard	Low	Lowpasty	7	20	12

2-component adhesives for construction & assembly

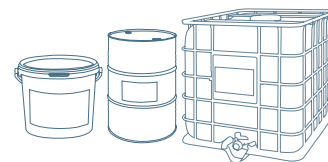
Adhesive system	Film property	Viscosity +20 °C	Pot life +20 °C [min]	Pressing time +20 °C [min]	Tensile shear strength +20 °C [N/mm ²]	Shore hardness [Shore D]
COSMO PU-200.120	Tough-hard	Low-pasty	5	20	22	85
COSMO PU-200.180	Tough-elastic	Medium pasty	115	420	13	50
COSMO PU-200.280	Tough-hard	Low-pasty	60	360	18	85
COSMO PU-200.310	Tough-hard	Low-pasty	20	90	18	85
COSMO PU-200.334	Semi-hard	Low-pasty	50	300	19	65
COSMO PU-200.350	Tough-hard	Low-pasty	30	180	20	80
COSMO PU-200.900	Tough-hard	Low-pasty	25	180	13	80

Emicode EC 1 ^{PLUS}	Bio-based DIN-tested	Wood bonding D4 + Watt 91	Steering wheel IMO FTPC	Colours	Packages
		D4 + Watt 91		beige	310 ml cartridge, 600 ml bag, 200 l drum
				beige	310 ml cartridge, 600 ml bag
		D4		white, black, grey	310 ml and 1,000 ml cartridge, 600 ml bag
			✓	beige	310 ml cartridge
		D4 + Watt 91		beige	310 ml cartridge, 600 ml bag
✓				beige	310 ml cartridge, 600 ml bag
		D4		opaque	310 ml cartridge
				beige	310 ml cartridge, 600 ml bag
	✓	D4 + Watt 91		beige	310 ml cartridge, 600 ml bag
		D4 + Watt 91		brown	500 g bottle, 5 and 10 kg canister, 220 kg drum
				brown, red	500 g bottle, 10 kg canister, 220 kg drum
		D4 + Watt 91		brown	10 kg canister, 220 kg drum
				beige, grey	500 g and 1,000 g bottle
				opaque, transparent-brown	310 ml and 1,000 ml cartridge
				opaque	310 ml cartridge
		D4 + Watt 91		opaque	310 ml cartridge, 600 ml bag

Bio-based DIN-tested	Steering wheel IMO FTPC	Colours	Packages
		oyster-white, black	2 x 310 ml tandem cartridge
	✓	beige	5.7 l bucket, 200 l drum, 500 ml bottle, 10 l canister
		beige, white, grey	2 x 190 ml & 2 x 310 ml tandem cartridge
		ivory	2 x 310 ml tandem cartridge
		graphite grey	2 x 190 ml tandem cartridge
		white	2 x 310 ml tandem cartridge
✓		white	2 x 310 ml tandem cartridge

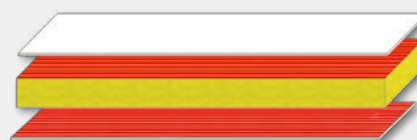
COSMO PU Polyurethane Adhesives

Adhesives for extreme conditions



Surface adhesives

To support you with the suitable adhesive in your individual production process when it has to do with surface bonding, we have developed a wide variety of systems with the most different properties referring viscosity, thixotropy, processing and pressing times.



Examples for application

1 Automotive manufacturing (roof lining, walls, floors & doors)

Refrigerated vehicle



Truck trailer



Motor caravan



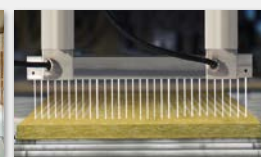
Ambulance



Delivery van



2 Shipbuilding (roof lining, walls, floors & doors)



3 Sandwich elements in the following areas

Balustrade



façade



Partition panel



Gate



Door



Panel



Stand construction



Container



Kitchen



Sandwich elements



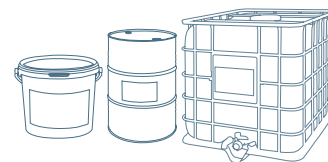
1 component	1	2	3	Particularities	
COSMO PU-125.110	•	•	•	Hardly inflammable	Low calorific value with 16 MJ/kg
COSMO PU-160.120	•		•	High-strength	High strengths, long open time
COSMO PU-160.160	•	•	•	Elastic	Elastic adhesive joint, medium process time
COSMO PU-160.180	•		•	Fast	Tough-elastic bonding joint, fast process time
COSMO PU-160.190	•		•	High-strength	D4 adhesive, wood professional
COSMO PU-160.260	•	•	•	Strongly foaming	Mineral wool specialist, hardly inflammable
COSMO PU-160.400	•		•	Highly viscous	Prevents penetration of adhesive
COSMO PU-160.440	•		•	Slow	Very long skinning time
COSMO PU-160.530	•		•	Plastics professional	Adheres to a very wide variety of substrates
COSMO PU-160.540	•		•	Fast	Very short process times, can be activated by heat
COSMO PU-170.110	•		•	Fibre-reinforced	Very high tensile shear strengths, fibre-reinforced adhesive, compensates force peaks
2 components					
COSMO PU-200.180	•	•	•	Versatile	Wide range of substrates, versatile application
COSMO PU-220.120	•		•	High-strength	High tensile shear strengths, tough-hard
COSMO PU-220.150	•		•	Vehicle professional	Medium pot life for special automotive manufacturing
COSMO PU-220.160	•		•	Allrounder	Good tensile shear strengths, good impact resistance
COSMO PU-220.180	•		•	Slow	Long pot life & processability
COSMO PU-220.260	•		•	Price-conscious	Long pot life & price efficiency
COSMO PU-220.400	•		•	Specialist	Plastics professional
COSMO PU-220.900	•	•	•	Hydrophobic	Slightest foaming, water-repellent, bio-based

Examples of materials



COSMO PU Polyurethane Adhesives

Adhesives for extreme conditions



1-component adhesives for surface bonding

Adhesive system	Film property	Foaming	Viscosity [mPa.s]	Skinning time Wet [min]	Pressing time +20 °C [min]	Tensile shear strength +20 °C [N/mm ²]
COSMO PU-125.110	Tough-hard	Low-medium	5,000	9	6	11
COSMO PU-160.120	Tough-hard	Medium	4,700	50	240	13
COSMO PU-160.160	Tough-elastic	Medium	3,500	25	120	9
COSMO PU-160.180	Tough-elastic	Medium	4,200	12	60	9
COSMO PU-160.190	Tough-hard	Medium-strong	4,500	5	20	13
COSMO PU-160.260	Tough-hard	Strong	8,500	16	60	10
COSMO PU-160.400	Tough-elastic	Medium	9,000	24	50	9
COSMO PU-160.440	Tough-elastic	Low-medium	4,000	75	480	5
COSMO PU-160.530	Elastic	Low-medium	6,500	40	240	6
COSMO PU-160.540	Tough-elastic	Medium	3,800	9	20	8
COSMO PU-170.110	Tough-elastic	Low-medium	3,000	50	90	15

2-component adhesives for surface bonding

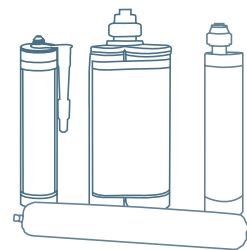
Adhesive system	Film property	Viscosity [mPa.s]	Pot life +20 °C [min]	Pressing time +20 °C [h]	Tensile shear strength +20 °C [N/mm ²]	Mixing ratio Binder : Hardener
COSMO PU-200.180	Tough-elastic	Medium pasty	115	7	13	100 : 15
COSMO PU-220.120	Tough-hard	3,000	40	2.5	22	100 : 26
COSMO PU-220.150	Semi-hard	3,000	100	5	16	100 : 20
COSMO PU-220.160	Semi-hard	3,000	75	4	16	100 : 20
COSMO PU-220.180	Elastic	3,100	480	16	6	100 : 16
COSMO PU-220.260	Elastic	3,100	480	16	6	100 : 16
COSMO PU-220.400	Elastic	2,600	300	16	4	100 : 16
COSMO PU-220.900	Tough-hard	5,000	130	7	15	100 : 19

Wood bonding D4 + Watt 91	Steering wheel IMO FTPC	Colour	Packages
	✓	beige	1,000 l container
✓		brown	10 kg canister, 200 l drum
	✓	brown	1,000 l container
		brown	500 g bottle, 10 kg canister
✓		brown	10 kg canister, 220 l drum
		brown	200 l drum, 1,000 l container
		brown	1,000 l container
		brown	1,000 l container
		brown	1,000 l container
		beige-red	1,000 l container
✓		opaque	200 l drum, 1,000 l container

Shore hardness [Shore D]	Bio-based DIN-tested	Steering wheel IMO FTPC	Colour	Packages
50		✓	beige	5.7 l canister, 200 l drum
85			beige	31.5 l hobbock, 200 l drum
65			beige	200 l drum, 1,000 l container
65			beige	200 l drum, 1,000 l container
45			beige	13.2 l bucket, 31.5 l hobbock, 200 l drum, 1,000 l container
45			beige	1,000 l container
30			beige	1,000 l container
60	✓	✓	white	200 l drum, 1,000 l container

COSMO HD Hybrid Polymer Adhesives

Environment-oriented bonding & sealing



Hybrid-polymer adhesives

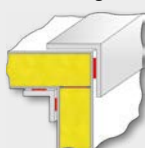
This new generation of adhesives and bonding sealants has been developed on the basis of alternative raw materials. In contrast to conventional PUR construction and assembly adhesives, whose content materials are subject to labelling as per Ordinance on Hazardous Substances, we are offering the COSMOS HD alternative system for the consequent, environment-oriented user.

Structural bonding in automotive manufacturing

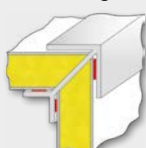


1

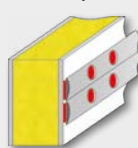
Roof angles



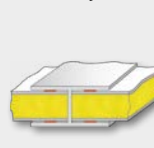
Corner angles



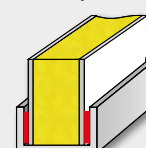
Strips



Butt joints



Stop beads



Motor caravan



Refrigerated vehicle



Truck trailer



Ambulance



Mobile shop



Trailer



Bus



Train



Other fields of application



2



3



4



5



6



7



8



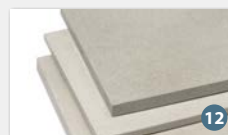
9



10



11



12



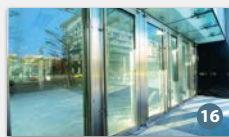
13



14



15



16



17



18



19

- 1 Bonding and sealing in automotive manufacturing
- 2 Assembly bonding
- 3 Skirting, laying of laminate and cable ducts
- 4 Mirror bonding
- 5 Stair construction and building trade
- 6 Tile repair
- 7 Glass bonding
- 8 Fixation of signs
- 9 Bonding and sealing of joint tapes
- 10 Bonding of EPDM films and profiles
- 11 Bonding of façade sandwich elements
- 12 Doubling of dry screed elements
- 13 Surface bonding of glass-fibre wall-papers or wood floorings
- 14 Dry finish and interior finishing
- 15 Solar and wind power plants
- 16 Window and door construction
- 17 Apparatus and plant construction
- 18 Diverse industrial fields
- 19 Shipbuilding

Sealing adhesives	1	2	3	4	5	6	7	8	9	10	11	12	13	14	15	16	17	18	19	Particularities
COSMO HD-100.400	•	•	•	•	•	•	•	•			•			•	•	•	•	•	(•)	Versatile
COSMO HD-100.450	•	•	•	•	•	•	•	•						•		•	•	•		Powerful
COSMO HD-100.455	•	•	•	•	•		•	•									•	•		Medium tack
COSMO HD-100.460	•	•	•		•	•	•	•			•			•	•	•	•	•		Bacteriostatic
COSMO HD-100.470	•	•	•		•		•	•			•			•	•		•	•		Fast
Bonding sealants																				
COSMO HD-150.160	•	•	•				•	•		•							•	•		Transparent
COSMO HD-100.600	•								•	•						•	•	•		Sealing
Elastic assembly adhesives																				
COSMO HD-100.110	•	•	•				•	•			•	•	•	•	•			•	•	Hardly inflammable
COSMO HD-100.170	•	•	•		•		•	•			•							•		Fast
COSMO HD-100.220	•	•	•		•		•	•			•			•			•	•		Powerful
COSMO HD-100.500	•	•	•		•		•	•	•		•						•	•		High tensile shear strength
COSMO HD-100.510									•											Window joint tape professional
COSMO HD-200.101	•	•	•		•	•	•	•			•			•	•	•	•	•	(•)	Tested
COSMO HD-200.201	•	•	•		•		•	•			•			•	•	•	•	•		Tested
Elastic surface adhesive																				
COSMO HD-120.110										•		•	•	•						Surface specialist

• Suitable (•) Of limited suitability

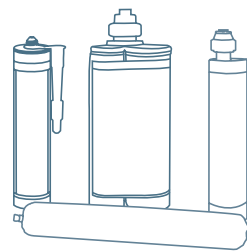
Examples of materials



For pre-treatment we recommend our *activator* **COSMO CL-310.110** (p. 26)

COSMO HD Hybrid Polymer Adhesives

Environment-oriented bonding & sealing



Sealing adhesives

Adhesive system	Viscosity [mPa*s]	Skinning time [min]	Shore hardness A	Tensile shear strength +20 °C [N/mm ²]	Breaking elongation %
COSMO HD-100.400	600,000	12	55	3.1	350
COSMO HD-100.450	1,200,000	6	60	3.0	250
COSMO HD-100.455	950,000	6	58	2.9	350
COSMO HD-100.460	500,000	12	50	2.0	350
COSMO HD-100.470	600,000	5	50	2.8	350

Bonding sealants

Adhesive system	Viscosity [mPa*s]	Skinning time [min]	Shore hardness A	Tensile shear strength +20 °C [N/mm ²]	Breaking elongation %
COSMO HD-150.160	300,000	10	36	2.3	230
COSMO HD-100.600	250,000	15	30	2.3	500

Elastic assembly adhesives

Adhesive system	Viscosity [mPa*s]	Skinning time [min]	Shore hardness A	Tensile shear strength +20 °C [N/mm ²]	Breaking elongation %
COSMO HD-100.110	75,000	9	72	4.5	75
COSMO HD-100.170	300,000	4	72	4.0	75
COSMO HD-100.220	2,400,000	5	70	4.5	130
COSMO HD-100.500	100,000	9	72	2.0	135
COSMO HD-100.510	520,000	15	32	2.0	250
COSMO HD-200.101	150,000	30	63	4.0	250
COSMO HD-200.201	170,000	40	48	2.0	270

Elastic surface adhesive

Adhesive system	Viscosity [mPa*s]	Skinning time [min]	Shore hardness A	Tensile shear strength +20 °C [N/mm ²]	Breaking elongation %
COSMO HD-120.110	8,000	50	50	3.5	500

No marking required and solvent-free	Emicode EC 1 ^{PLUS}	Food industry ISEGA	Sealing ETAG 022	Steering wheel IMO FTPC	Colours	Packages
✓	✓	✓	✓		white, black, grey	310 ml cartridge, 600 ml bag
✓	✓		✓		white	310 ml cartridge, 600 ml bag
✓	✓				white	310 ml cartridge, 600 ml bag
✓	✓				white	310 ml cartridge, 600 ml bag
✓			✓		white	310 ml cartridge, 600 ml bag

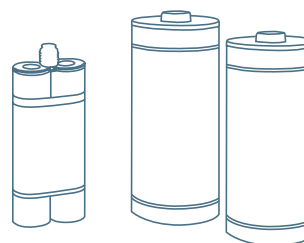
No marking required and solvent-free	Emicode EC 1 ^{PLUS}	Food industry ISEGA	Sealing ETAG 022	Steering wheel IMO FTPC	Colours	Packages
✓					transparent	310 ml cartridge, 600 ml bag
✓			✓		white, black, grey	310 ml cartridge, 600 ml bag

No marking required and solvent-free	Emicode EC 1 ^{PLUS}	Food industry ISEGA	Sealing ETAG 022	Steering wheel IMO FTPC	Colours	Packages
✓	✓			✓	white	310 ml cartridge, 600 ml bag
✓					white	310 ml cartridge, 600 ml bag
✓	✓				white	310 ml cartridge, 600 ml bag
✓	✓				white	310 ml cartridge, 600 ml bag
✓					creme white	600 ml bag
✓	EC 2		✓		white, grey	195 ml uTAH cartridge, 400 ml s.b.s. cartridge
✓					grey	2 x 310 ml tandem cartridge

No marking required and solvent-free	Emicode EC 1 ^{PLUS}	Food industry ISEGA	Sealing ETAG 022	Steering wheel IMO FTPC	Colours	Packages
✓					white	13.2 l bucket

COSMO EP Epoxy Adhesives

Adhesives for especially high strengths



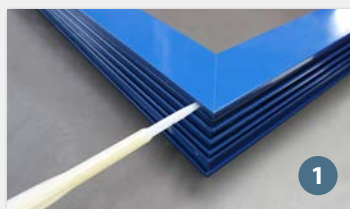
Epoxy adhesive

Our epoxy adhesive system consists of two components, a resin and a hardener system. It achieves especially high strength, very good heat-resistant bonding and provides an optimum when it is used for structural, high-strength bonded joints.

Examples for application

- 1 Aluminium window and door construction for bonding of corner joints
- 2 For bonding of natural and artificial stone
- 3 Fixation of struts for double floorings

	1	2	3
COSMO EP-200.110	•	•	•



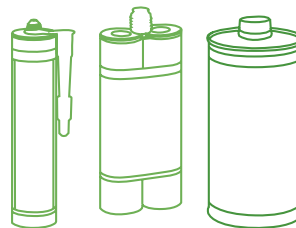
Material suitability



Epoxy adhesive	COSMO EP-200.110
Film property	Tough-hard
Viscosity (+20 °C)	Medium viscous-pasty
Top live (+20 °C)	60 min
Tensile shear strength (+20 °C)	18 N/mm ²
Shore hardness	85 D
Pressing time (+20 °C)	5 h
Colour	grey
Packages	2 x 310 ml tandem cartridge, 2 x 1,000 ml single PE-Euro cartridges

COSMO BIO-BASED

The bio-based product range

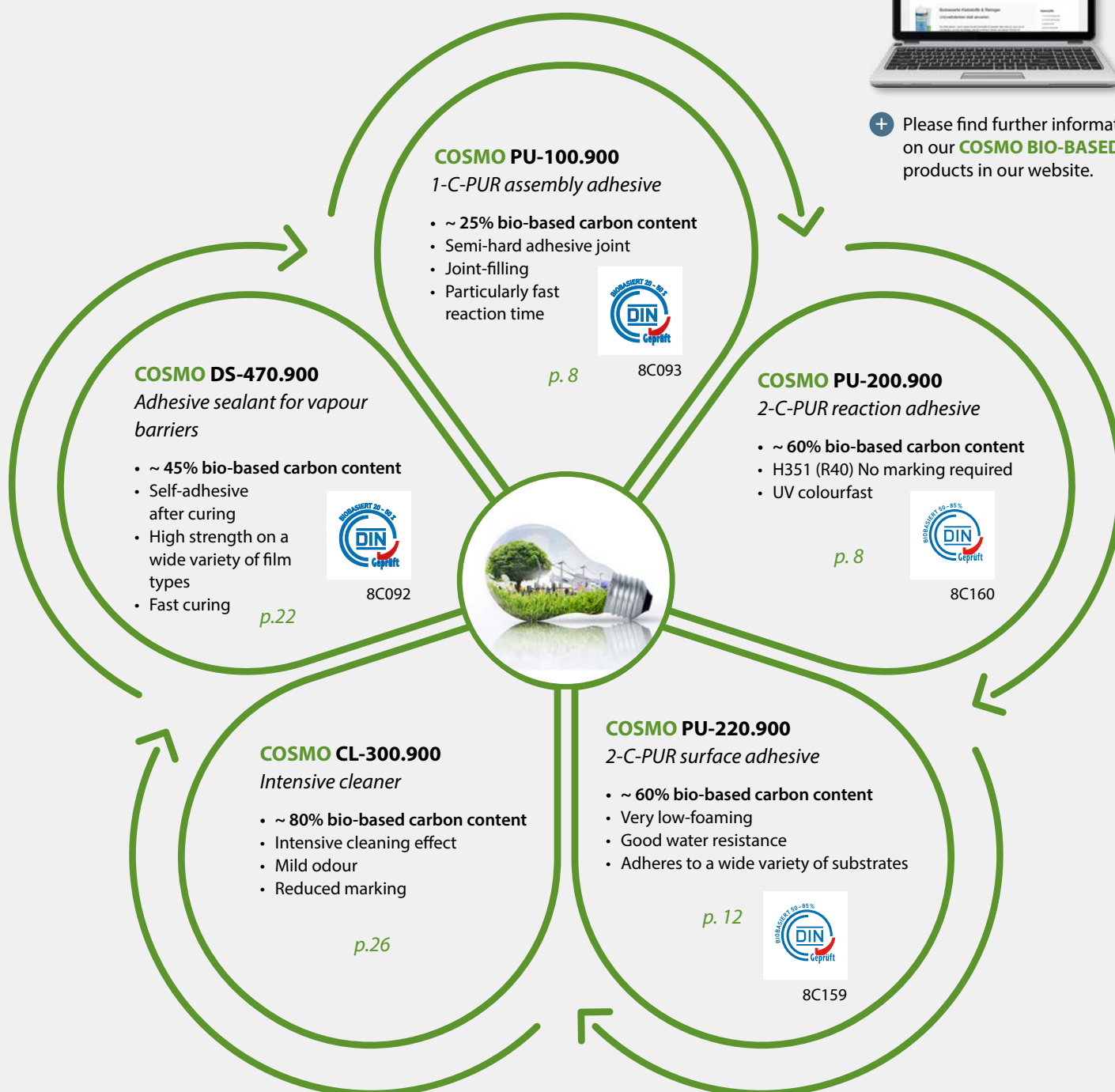


Bio-based adhesives

Our bio-based adhesives and cleaners include a defined content of raw materials from renewable sources. Simultaneously, we could further optimise the properties.



+ Please find further information on our **COSMO BIO-BASED** products in our website.



COSMO CA Superglues

The extremely fast setting adhesives



Superglues

The solvent-free, one-component superglues made by Weiss especially feature high universality and support you efficiently in all processes where especially fast and powerful bonding is important. The most difficult material connections which, in the past, could only be achieved by complex bonding processes with long pressing and rest times, can now be performed with our highly-modern CA-adhesives within seconds and are immediately ready for the next production process.

Examples for application

Model making



Metal construction



Sealing technique



Plastics / rubber processing



Furniture production



Window and door construction



Advertising technique



Clocks, jewellery and prize



Leather and shoe industry



Toy industry



Electrical and electronic industry



Medical and dental technology



Adhesive system	Fixing time	Adhesive joint	Viscosity [mPa.s]	Heat resistance [°C]	Weather resistance
COSMO CA-500.110	Short	Hard	20	125	High
COSMO CA-500.120	Short	Hard	90	125	High
COSMO CA-500.130	Long	Hard	900	90	High
COSMO CA-500.140	Long	Hard	1,000	85	Good
COSMO CA-500.150	Long	Hard	90	135	Good
COSMO CA-500.160	Long	Elastic	70	75	Good
COSMO CA-500.170	Long	Hard	280	85	High
COSMO CA-500.200	Short	Hard	20	125	High
COSMO CA-510.110	Long	Hard	1,200	80	High

Examples for application

Adhesive system	1	2	3	4	5	6	7	8	9	10	11	12	
COSMO CA-500.110		•	•	•		•	•	•	•	•	•	•	Super-fast
COSMO CA-500.120	•	•	•	•	•	•	•	•	•	•	•	•	For universal use
COSMO CA-500.130	•	•			•	•	•		•			•	Decoration specialist
COSMO CA-500.140		•						•		•	•		Metal adhesive
COSMO CA-500.150		•		•							•	•	Heat-resistant
COSMO CA-500.160		•	•	•					•				The elastic adhesive
COSMO CA-500.170	•			•	•		•		•	•			Our assembly professional
COSMO CA-500.200													Plastics adhesive
COSMO CA-510.110	•	•	•	•	•		•	•	•	•	•		Extremely non-slump

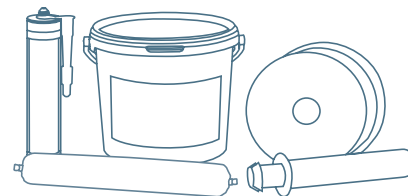
Material suitability

Adhesive system	Alu- mini- um	Steel	ABS	PS	GFK	PVC	PMMA	HPL	Wood	MDF	Card- board	Leath- er	EPDM
COSMO CA-500.110	•		•	•	•	•	•	•				•	•
COSMO CA-500.120	•		•	•	•	•	•	•				•	•
COSMO CA-500.130			•	•	•	•	•	•					
COSMO CA-500.140	•	•			•			•					
COSMO CA-500.150	•	•			•			•					
COSMO CA-500.160													
COSMO CA-500.170			•	•	•	•	•	•	•	•	•	•	
COSMO CA-500.200	•		•	•	•	•	•	•				•	•
COSMO CA-510.110			•	•	•	•		•	•	•	•	•	•

For absorbent substrates	Functional strength [seconds]	Curing time [hours]	Gap bridging [mm]	Packages
Limited suitability	4-8	16	max 0.1	20 g, 50 g and 500 g bottle
Limited suitability	4-15	16	max 0.1	20 g, 50 g and 500 g bottle
Limited suitability	15	16	max 0.1	20 g, 50 g and 500 g bottle
Limited suitability	20-100	16	max 0.1	20 g, 50 g and 500 g bottle
Limited suitability	4-15	16	max 0.1	20 g, 50 g and 500 g bottle
Limited suitability	15	16	max 0.1	20 g, 50 g and 500 g bottle
Well suited	20-360	16	max 0.15	20 g, 50 g and 500 g bottle
Limited suitability	5-9	16	max 0.1	20 g, 50 g and 500 g bottle
Well suited	15-240	16	max 0.1	20 g tube

COSMO DS Dispersion Adhesives

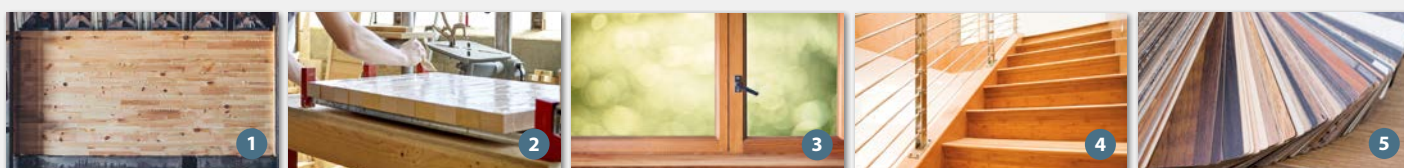
Adhesive sealants for building trade and industry



Dispersion adhesives

We are offering classic PVAc dispersion glues that meet the D2, D3- or D4 characteristics and certainly, also the requirements of WATT 91. We are also offering a choice of adhesive sealants that are mainly used in the field of "airtight bonding". Our products are continuously tested and monitored in accordance with the applicable DIN and EN standards.

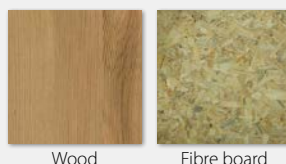
Examples for application - Gluing of wood



- 1 Gluing of joints in assembly parts, between boards as well as of surfaces of wood and fibrous elements
- 2 Gluing of softwood, hardwood and exotic wood for cold, hot, as well as for high-frequency gluing
- 3 Production of wood windows and doors for gluing of the corner connections
- 4 Stairway construction
- 5 Gluing of veneer

Adhesive system	1	2	3	4	5
COSMO DS-400.110	•	•	•	•	
COSMO DS-400.150	•	•			•
COSMO DS-400.210	•	•	•	•	

Material suitability



Wood

Fibre board

Adhesive system	Application	Basis	Viscosity [mPa.s]	Film property
COSMO DS-400.110	Wood adhesive, EN204 - D3	PVAc dispersion	13,000	Tough-elastic
COSMO DS-400.150	Wood adhesive, EN204 - D2	PVAc dispersion	13,000	Semi-hard
COSMO DS-400.210	Wood adhesive, EN204 - D4	PVAc dispersion	5,500	Tough-elastic
COSMO DS-420.110	Adhesive sealant for assembly works as per DIN 4108-7/11, EnEV	Modified acrylate polymer dispersions	Medium viscous-pasty	Permanently elastic
COSMO DS-420.240	Vapour barriers - adhesive sealant as per DIN 4108-7/11, EnEV	Modified acrylate polymer dispersions	Medium viscous-pasty	Permanently elastic, self-adhesive
COSMO DS-450.110	Vapour barriers - adhesive sealant as per DIN 4108-7/11, EnEV	TPE	-	Permanently elastic, self-adhesive
COSMO DS-470.900	Vapour barriers - adhesive sealant as per DIN 4108-7/11, EnEV	Modified dispersions	Medium viscous-pasty	Permanently elastic, self-adhesive

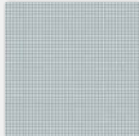


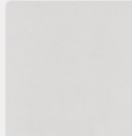

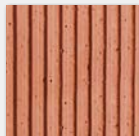


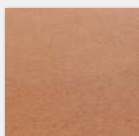
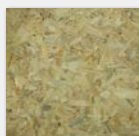

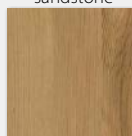
Examples for application - airtight and windtight bonding

- 6** For permanently elastic, airtight bonding of joints, structural connections and overlaps, sealing of diffusion barriers, vapour-proof barriers and sealing films in dry construction (excluding swimming pools) in accordance with the energy saving regulation EnEV 2016
- 7** Bonding of connecting and overlapping joints of moisture-diffusing underlays in the roof and façade area
- 8** Bonding/sealing of diffusion-tight and moisture diffusing seal tapes with window and door assembly



Adhesive system	6	7	8
COSMO DS-420.110	•		•
COSMO DS-420.240	•		•
COSMO DS-450.110	•	•	•
COSMO DS-470.900	•		•

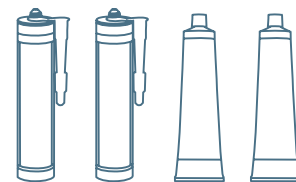
Material suitability

			
PA	PE	PP	Gypsum
			
Stone	Roof-tiles	Cement plaster	Calcareous sandstone
			
Soft fibre board	OSB fibre board	Ceramics	Wood

Colour	Open time +20 °C [min]	Pressing time +20 °C [min]	Emicode EC 1 ^{PLUS}	Bio-based DIN-tested	Packages
opaque	12	22			13.2 l bucket, 31.5 l hobbock, 150 l drum
opaque	12	15			31.5 l hobbock
opaque	17	22			13.2 l bucket, 31.5 l hobbock
white-green			✓		310 ml cartridge, 600 ml sachet
light blue			✓		310 ml cartridge, 600 ml sachet
transparent			✓		16 linear metres / adhesive on a roll
Pearl-white			✓	✓	310 ml cartridge, 600 ml sachet

COSMO SL Dispersion Adhesives

Bonding of parts of hard PVC and acryl (PMMA)



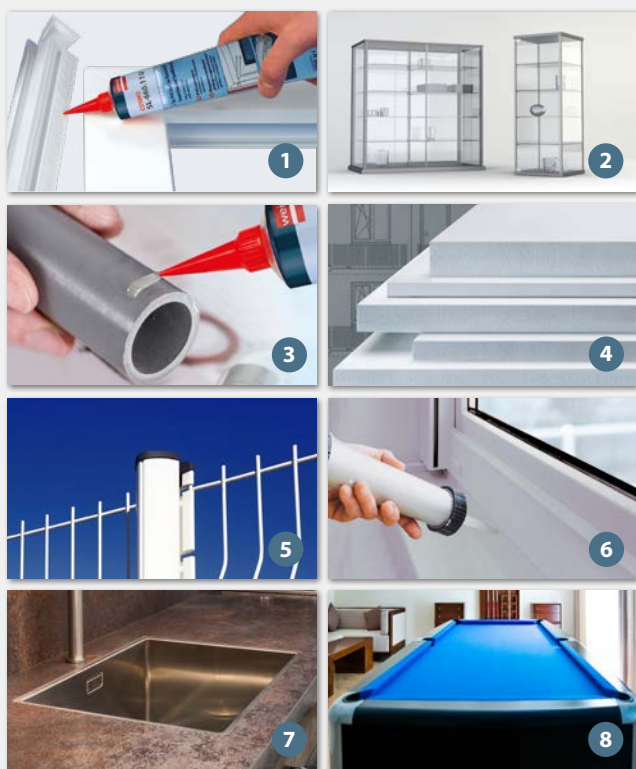
Diffusion adhesives

Our diffusion adhesives for bonding parts of hard PVC and acryl (PMMA) have proved to be successful for more than 40 years. In addition to the good resistance to weather and UV-radiation, these adhesives also feature their film resistance to aging.

Examples for application

- 1 Plastic window construction: Bonding of additional profiles, like sill drips, drain bars, blow bars and shutter bars
Bonding of cover caps and shutter guides in PVC profiles
- 2 Construction of display cabinets: constructive bonding of acrylic plates with each other
- 3 Sanitary area: Bonding of tubes and rain gutters (no pressure pipes)
- 4 Construction of trade fair and promotional signs: constructive bonding of integrated rigid foam slabs, e.g. Forex plates
- 5 made of PVC hard
- 6 Bonding of cover/end caps on sections of hard PVC, e.g. fence poles
- 7 Joint sealing up to 7 mm joint width, e.g. between window sill and window profile (not suitable for expansion joints e.g. as per DIN EN 15651, etc.)
- 8 Construction of sinks and shop counters: Bonding of stainless steel sheets with chipboards and batten boards
Bonding of rubber, felt, HPL (DKS), diverse plastics and metals on chipboards, hard fibre and laminated boards, as well as insulating materials (not suitable for polystyrene or other types of PS foam)

Adhesive system	Application	Basis	Viscosity [mPa.s]
COSMO SL-650.120	ASSEMBLY	PMMA polymers in solvent	2,600
COSMO SL-660.110	ASSEMBLY	Vinyl chloride polymers in solvent	3,100
COSMO SL-660.120	ASSEMBLY	Vinyl chloride polymers in solvent	4,000
COSMO SL-660.130	ASSEMBLY	Vinyl chloride polymers in solvent	4,000
COSMO SL-660.150	ASSEMBLY	Thermoplastic Polymers in solvent	Medium viscous-pasty
COSMO SL-660.180	ASSEMBLY	Vinyl chloride polymers in solvent	2,500
COSMO SL-660.190	ASSEMBLY	Vinyl chloride polymers in solvent	2,500
COSMO SL-660.210	ASSEMBLY	Vinyl chloride polymers in solvent	4,000
COSMO SL-660.220	ASSEMBLY	Vinyl chloride polymers in solvent	4,000
COSMO SL-670.110	Surface	Polychloroprene in solvent	2,000



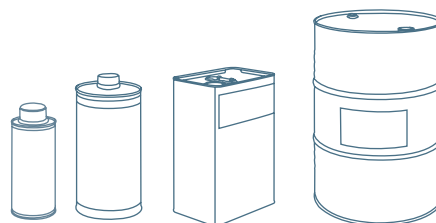
Adhesive system	1	2	3	4	5	6	7	8
COSMO SL-650.120		•						
COSMO SL-660.110	•		•	•				
COSMO SL-660.120	•		•	•				
COSMO SL-660.130	•		•	•				
COSMO SL-660.150	•		•	•	•	•		
COSMO SL-660.180	•		•	•				
COSMO SL-660.190	•		•	•				
COSMO SL-660.210	•		•	•				
COSMO SL-660.220	•		•	•				
COSMO SL-670.110							•	•

Material suitability

Film property	Colour	Open time [s]	Packages	Alu- mini- um	Stainless steel	PVC hard	Acryl	Wood	EPDM
Tough-hard	colourless	40	180 g tube				•		
Tough-hard	opaque	60	200 g tube			•	•		
Tough-hard	white	60	200 g tube			•	•		
Tough-hard	colourless	60	200 g tube			•	•		
Elastic	white	45-60	310 ml cartridge			•	•	•	
Tough-hard	colourless	60	10 kg bucket			•	•		
Tough-hard	colourless	120	180 g tube			•	•		
Semi-hard	colourless	60	200 g tube			•	•		
Semi-hard	white	60	200 g tube			•	•		
Tough-elastic	amber	-	800 g can, 12 kg bucket	•	•	•	•	•	•

COSMO CL Cleaning Agent

Professional cleaning



Cleaners & Activators

Our solvent-based cleaning agents are available with different concentrations for different levels of pollution and cleaning tasks. Furthermore, we are offering a choice of cleaning agents based on surfactants as well as activators for activation of the adhesive surfaces.

Cleaning, Polishing, Smoothing & Activating of diverse surfaces before and after bonding

Non-solvating cleaning

Removal of fresh adhesive residues, dust, grease pencil, rubber residues, fresh PUR foam, as well as tar and bitumen spots, preparation of bonding

Solvating cleaning

Preparation of bonding, removing of markings and coarse dirt



Application	Solvating	PVC plastics	Plastics General	Film-laminated surfaces	Powder-coated & anodised surfaces	Metals	Mineral substrates
CLEANING	Not	CL-300.140 <small>SPECIAL</small> CL-300.150	CL-300.140 <small>SPECIAL</small>	CL-300.150	CL-300.150	CL-300.120 CL-300.900	CL-310.110 CL-310.120
Smoothing / polishing	Strong	CL-300.110					
	Slight	CL-300.120 CL-300.900					
Activating	Not	CL-310.110 CL-310.120					

Cleaner system	Cleaner type	Plastics
COSMO CL-300.110	PVC cleaning agent	Solvating
COSMO CL-300.120	PVC cleaning agent	Solvating
COSMO CL-300.140 <small>SPECIAL</small>	Plastics cleaner	Non-solvating
COSMO CL-300.150	Special cleaner	Non-solvating
COSMO CL-300.900	Intensive cleaner	Solvating
COSMO CL-300.200	Industrial cleaning agent	Non-solvating
COSMO CL-300.220	Tool cleaners	Non-solvating
COSMO CL-310.110	Activator	Non-solvating
COSMO CL-310.120	Activator	Non-solvating
COSMO CL-300.220	Tool cleaners	Non-solvating
COSMO CL-350.110	Cleaning milk	Non-solvating
COSMO CL-360.110	Special cleaner	Non-solvating

Cleaning & Caring



- 1 Cleaning of tools and adhesive applicators from not cured PUR and epoxy reaction adhesives
- 2 PVC hard white and aluminium-anodized surfaces, as well as for cleaning other smooth, mainly plastics-based surfaces
- 3 Cleaning of surfaces in the field of wood, plastics and aluminium window, door and façade construction
- 4 Regular care of already assembled window, door and shutter profiles
- 5 Streak-free cleaning of glass and high gloss surfaces

	1	2	3	4	5
COSMO CL-300.220	•				
COSMO CL-350.110		•		•	
COSMO CL-360.110			•	•	•

Cleaning & care of windows and doors

COSMO CL-Service Set

Practical sets for cleaning, care, protection and maintenance of windows and door profiles, roller shutters, sealings and mechanic systems.

Contents of service set for white profiles and decorative profiles

- Cleaning milk (CL-350.110) or special colour cleaning agent (CL-360.110)
- Sealing care
- Fitting oil
- Cleaning rag



Particularity	Packages
Fast drying	1,000 ml bottle, 10 l canister
No impairment on weather resistance of cleaned PVC profiles	1,000 ml bottle, 10 l canister
Antistatic effect	1,000 ml bottle, 10 l & 30 l canister, 200 l drum
Mild odour during processing	1,000 ml bottle, 10 l canister
Contains approx. 80% bio-based raw material content, mild odour	1,000 ml bottle, 10 l canister
Strongly degreasing effect	1,000 ml bottle
Also solvates partially cured/cured adhesives	10 l canister
It cleans and activates the bonding surface	250 ml bottle, 1,000 ml bottle
Cleans and activates the bonding surface, fluorescent	250 ml bottle
Also solvates partially cured/cured adhesives	200 l drum
Intensive cleaning effect, gentle to surface, pH neutral	200 ml bottle, 500 ml bottle
Intensive cleaning effect, gentle to surface, pH neutral	200 ml bottle, 500 ml bottle

Special Products & Processing Equipment

Bonding technique from one source

Special products

COSMO SP-830.180

Primer / first coat

For adhesion promotion and improvement on various absorbent and mineral substrates.

Packages: 1,000 g bottle



COSMO SP-840.110

Primer / first coat

Adhesion promotion for bonding of TPE- and silicone seals with COSMO CA-adhesives. Replaces very expensive pre-treatment procedures.

Packages: 50 ml brush bottle



COSMO SP-620

Paste paints

Staining of adhesive reaction systems

Colours: blue, yellow, white, red, black

Packages: 50 ml bottle

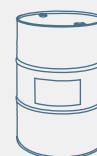


COSMO SP-780.110

Bending fluid

For reshaping and bending of thermoplastic plastics profiles. Odourless and biodegradable.

Packages: 35 kg hobbock, 250 kg drum



COSMO SP-710.110

PVC repair agent

Repair of cracks, wrong bores and other damages on white PVC-hard sections. Fast, easy to use, safe and impact-tough.

Packages: 13 g can & 6 g glass bottle



COSMO SP-860.110

CA accelerator

For accelerated and controlled curing of COSMO CA adhesives

Packages: 200 ml tube, 5 l canister



Processing equipment

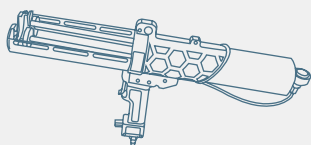
Pressure guns

COSMO SP-750.112

for 2 x 190 ml tandem cartridges

COSMO SP-750.122

for 2 x 310 ml tandem cartridges



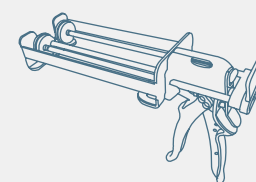
Manual pressure gun

COSMO SP-760.141

for 2 x 190 ml tandem cartridges

COSMO SP-760.151

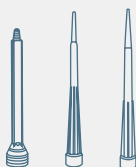
for 2 x 310 ml tandem cartridges



COSMO SP-800

Static mixing tubes

For homogeneous mixing of 2-C-adhesives for the use of tandem cartridges.



COSMO SP-810.120

Eco-humidifier

For optimum and economic dosing of COSMO-CL solvent-based cleaning agents. Safety container with GS-sign.

5l safety container

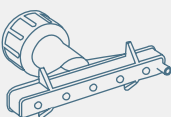


COSMO SP-810

Flat nozzle

For easy processing of thixotropic and flowable adhesives.

Application width adjustable for 20-75 mm.



COSMO SP-810.110

CA capillaries

For the exact dosing of CA-adhesives. Matches to CA drip tip and CA cap.



Synergy

Linked solutions with **COSMO** adhesives and sandwich elements

Benefit from a system that has been tuned perfectly and adapted to your application!

Examples of application

By combining our **COSMO adhesives** with our **COSMO sandwich elements and façade elements** we are able to provide reliable solutions for you in the fields of construction, automotive manufacturing, RVE (frame widening elements), ship and yacht building, and much more from one source.

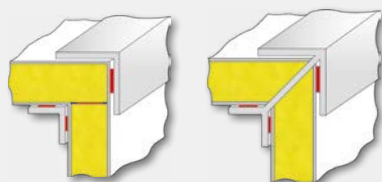
This advance of competence offers important advantages for you referring your individual project. Already during the planning phase, we can react to your specific wishes and requirements.

Your advantages at a glance:

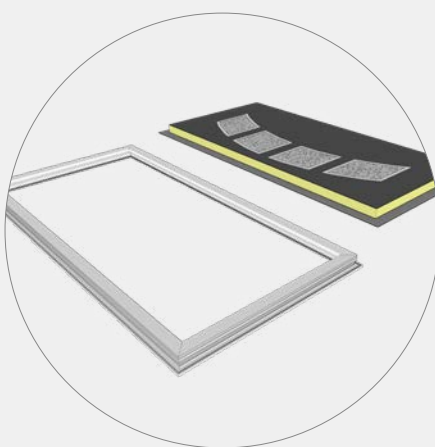
- + A fine-tuned system used from the beginning
- + Advice and planning from one source
- + Tested materials
- + High safety with certified systems
- + Innovative ideas and approaches possible
- + Problem solutions can be implemented fast



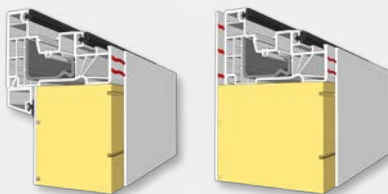
For the automotive manufacturing:



- 1 The controlled 2-C-STP Construction Adhesive **COSMO HD-200.101** for bonding and sealing applications in automotive manufacturing and vehicle body manufacture.
- 2 **COSMO Tech - GFK sandwich elements** for the construction of ceiling elements, side walls and floor plates.



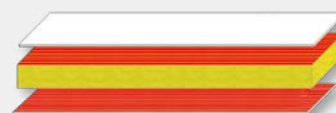
For leaf-enclosing entrance doors:



- 1 The controlled 2-C-STP construction adhesive **COSMO HD-200.101** for joining of top coat and section frame.
- 2 **Filling components** (top coats and core materials) for unlimited functional and design possibilities.



For the caravan construction:



- 1 Process optimised 1-C-PUR surface adhesives **COSMO PU-160.540** and **COSMO PU-160.530** for bonding and the production of side walls of caravans.
- 2 **COSMO Tech - GFK sandwich elements** for the construction of ceiling elements, side walls and floor plates.

Digital media

Interactive communication

Always up to date

We are happy to bring our products and fields of application closer to you at the **www.weiss-chemie.de** and to keep you informed about the latest developments.



Current issues



- + By our slide show and our News column you are always informed on current topics and remain up to date.

Fields of Application



- + The reorganisation of our Fields of Application enables you to intentionally look for application solutions and conveniently to navigate to your search target.

Service / Downloads



- + In our Product / Application area, you will directly find the appropriate contact person. In addition, you can easily download all print media as well as data sheets.

Trade fairs



- + Visit us at our booths at the national and international trade fairs and obtain information online about all details and facts referring our participations in trade fairs.

PUDOL – Cleaning and care agent

- + **PUDOL** stands for convincing quality of special products in the field of commercial cleaning. In addition to a complete range of cleaning and care products for different applications, we are offering a comprehensive service with interesting solutions and benefits. Visit our website: **www.pudol.de**

Cleanliness refreshes your senses





Customer support

Flexibility and the creation of customer-oriented problem solutions count among the elementary objectives of our company. Therefore, it is very important to us to provide professional and innovative solutions with convincing advantages for production methods and with high efficiency in close cooperation with our customers.

A highly motivated team of application engineers, materials testers and chemists with long-term experience in development, modification, materials science, building physics and application of adhesives and sandwich elements is on hand with help and advice for you.



Application engineering Adhesives



- + Support with creating the requirements specification
- + Expert advice on the selection of adhesives
- + Optimisation tips for the design of the bonding surfaces
- + Rationalisation proposals for work flows
- + Recommendation of suitable dosing units as well as application and pressing technology
- + Optimisation of workplaces when using adhesives
- + Training for workers and specialist dealers; technical lectures
- + Creation and modification of adhesives in our Research and Development department



Test possibilities in our application technology and internal research and development department

- + With our own test facilities we are not only able to test in compliance with DIN and EN standards but we can also evaluate your components (component sizes) under operating conditions in a practice-oriented way. In addition, we ensure the high quality of our products on the basis our cooperation with the most diverse testing institutes.



Application engineering Sandwich elements



- + Individual element structure
- + Application-specific material components
- + Project-related proposals for solutions
- + Selection of materials in accordance with construction-physical requirements and conditions



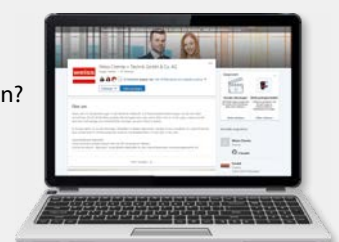
Test possibilities in our Technical Centre

- + **Materials tests:**
 - Storage at alternating climate
 - 3-point bending rigidity
 - Perpendicular tensile strength
 - Colour measurement
 - Storage in water
 - Determination of U-values
- ! Furthermore, we are working together with famous testing institutes that are responsible for fire protection and sound insulation.



Are you also a member of LinkedIn? Then follow us. We regularly post interesting news. You will find us at:

Weiss Chemie + Technik GmbH & Co. KG.



An overview of our range of products

Experience quality on a completely new level, with the powerful products by Weiss:



COSMO Adhesives

Durably firm joints

COSMO CA (Cyanoacrylates)
COSMO PU (Polyurethane adhesives)
COSMO CL (Cleaning agents)
COSMO SL (Dispersion adhesives)
COSMO HD (Hybrid adhesives)
COSMO EP (Epoxy-resin adhesives)
COSMO DS (Dispersion adhesives)
COSMO SP (Service products)

Fields of application

- + Windows and doors
- + Transportation / Marine engineering
- + Industry
- + ASSEMBLY
- + Dry construction
- + Airtight bonding
- + Wood / Furniture industry
- + Container construction
- + Sandwich elements
- + Fire protection
- + Advertising industry



COSMO Sandwich elements

Unlimited possibilities for design

COSMO Therm (heat-insulating)
COSMO Silent (sound insulating)
COSMO Protect (penetration resistant)
COSMO Design (grooved)
COSMO Tech (individual)
COSMO Frame (frame widening)

Fields of application

- + Window and façade
- + Door construction
- + Industry
- + Automotive manufacturing
- + Trailer construction
- + Partition panel construction
- + Gate construction
- + Container construction
- + Energy conservation
- + Fire protection
- + Burglar resistance
- + Sound proofing



PUDOL Cleaning and care products

Cleanliness refreshes your senses

PUDOL SOFT
Mild cleaning agent for sensitive materials
PUDOL CARE
Maintenance product for high gloss and hygiene
PUDOL POWER
Powerful cleaning agent for extreme pollution
PUDOL FRESH
Cleaning agent for cleanliness and fresh air

Fields of application

- + Flooring
- + Sanitary installations
- + Clothing care
- + Foodstuff industry
- + Household and gastronomy
- + Windows and glass
- + Dishwasher
- + Carpet and upholstery
- + Industry and workshop
- + Cars
- + Skin cleaning
- + Skin protection



Weiss USA LLC
P.O. Box 509
Monroe,
North Carolina 28111-0509

Phone: (704) 282-4496
Fax: (704) 289-7091
Mail: info@weiss-usa.com
Web: www.weiss-usa.com